

SPAC (Seoul Performing Arts Center)

首爾藝術表演中心

Design company: LAR / Fernando Romero

Project design team: Fernando Romero, Wonne Ickx, Omar Gerela Flix, Dolores Robles, Martínez, Eduardo Sosa, Iris Lpez, Itzel Rendn, Gerardo Galicia, Luis Flores, Ricardo Herrera, Xu Di

設計公司: LAR / Fernando Romero

設計團隊: Fernando Romero, Wonne Ickx, Omar Gerela Félix, Dolores Robles, Martínez, Eduardo Sosa, Iris López, Itzel Rendón, Gerardo Galicia, Luis Flores, Ricardo Herrera, Xu Di

The architectural design of this opera and performing arts complex takes its inspiration from Korea's identity representing opposites kept in balance: the Ying Yang. Our proposal creates a sponge-like structure, in which the main programs are suspended. This originated a residual space around them which functions as a foyer for circulation and as a climatological and acoustical buffer zone. A promenade through this area allows visitors to enjoy bars and restaurants, and the unique scenery that the island in the middle of the Hangang River has to offer. The two main programs, the opera house and the concert hall, are placed on either sides of the highway. On the lower levels of the building the logistical and performers areas are situated. The upper levels are used mainly for public spaces, with the VIP-section at the top. The administrative office is situated between these private and public zones. Beyond the main program requirements for this

competition, our proposal offers facilities such as a museum, a cultural link connecting the opera house and concert hall, a cyber music area designed for electronic music and multimedia works; an auditorium meant for talks and conferences; and an educational centre offering musical lessons.

CHALLENGES: A bridge on top of the island will be both a symbol of duality and connection in a country where unification has not happened. We wanted to make an iconic and organic project that feels natural and connected to Korea: a new cultural epicentre for Asia.

REALIZATION: The structure of the building is conceived as a continuous sponge-like texture: a 3D web between the external skin and the program cores inside. Depending on the flow of physical forces, the sponge gets denser ØC thicker - or coarser - thinner - when necessary.SPAC (Seoul Performing Arts Center)



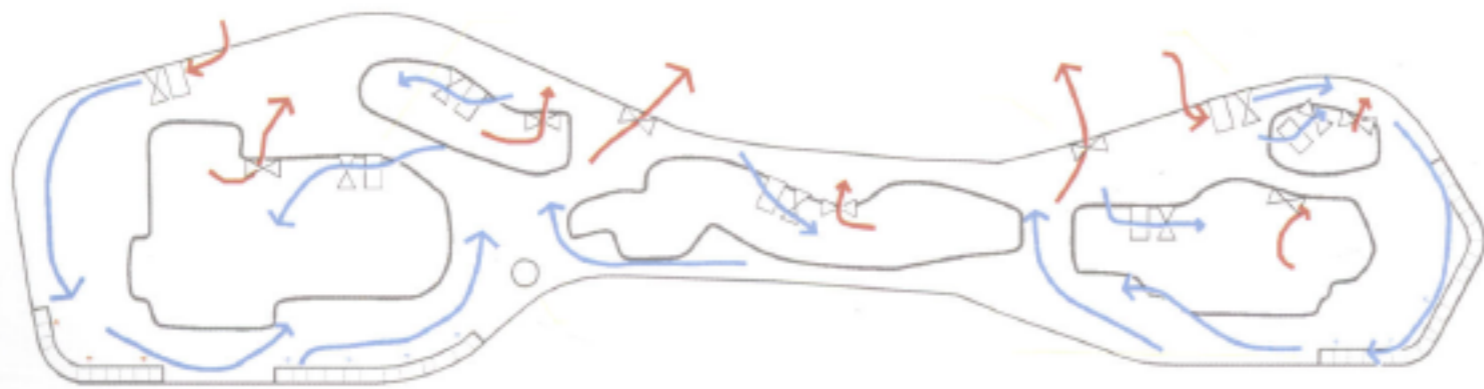
Program: A concert hall for 1500 people; a performance arts centre for 1600 people; a museum; auditorium; restaurants; bars; lounges; cybermusic area.
Year: 2005
Location: Island in the Hangang River, Seoul, Korea

項目：韓國首爾藝術表演中心 容納1500人的音樂廳，1600人的表演藝術中心，博物館，禮堂，餐廳，酒吧，休息室，網絡音樂特區。
時間：2005年
地點：韓國首爾漢江島嶼

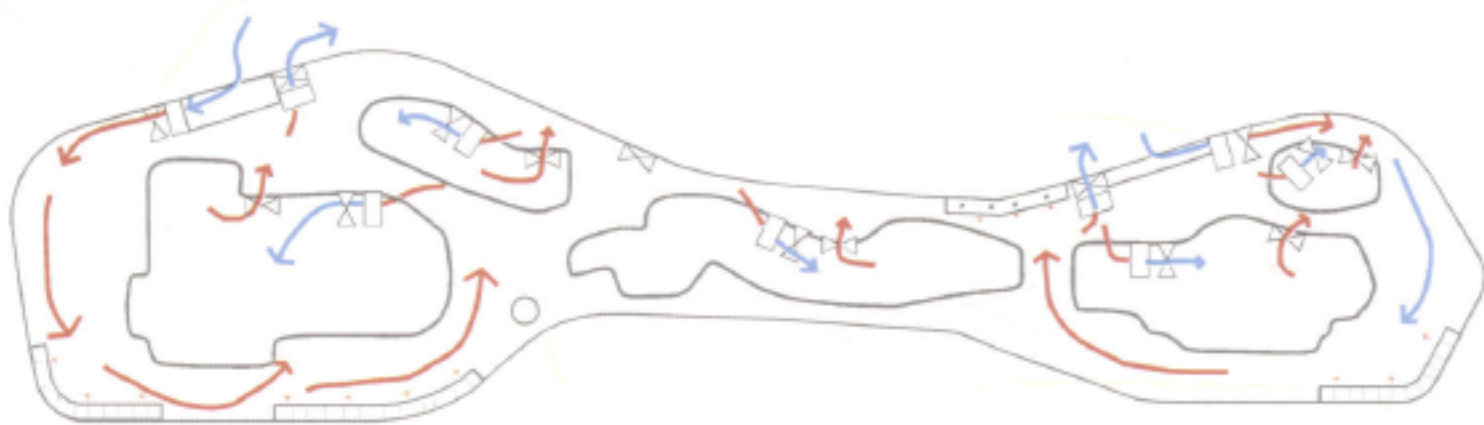




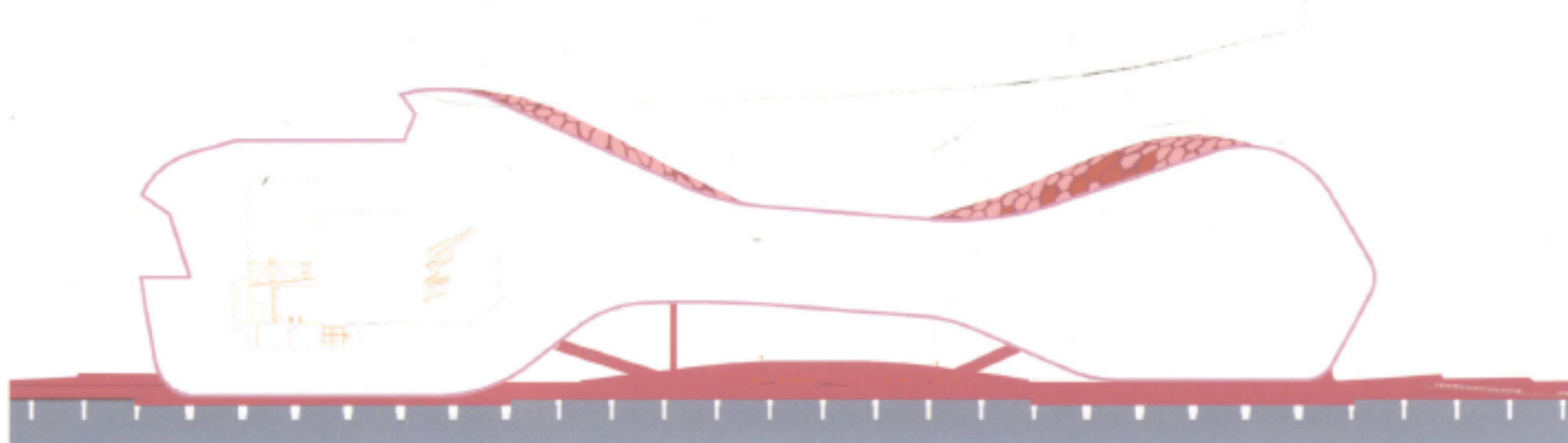
Diagrams skin
表面分析圖



Environmental principle
環境分析圖



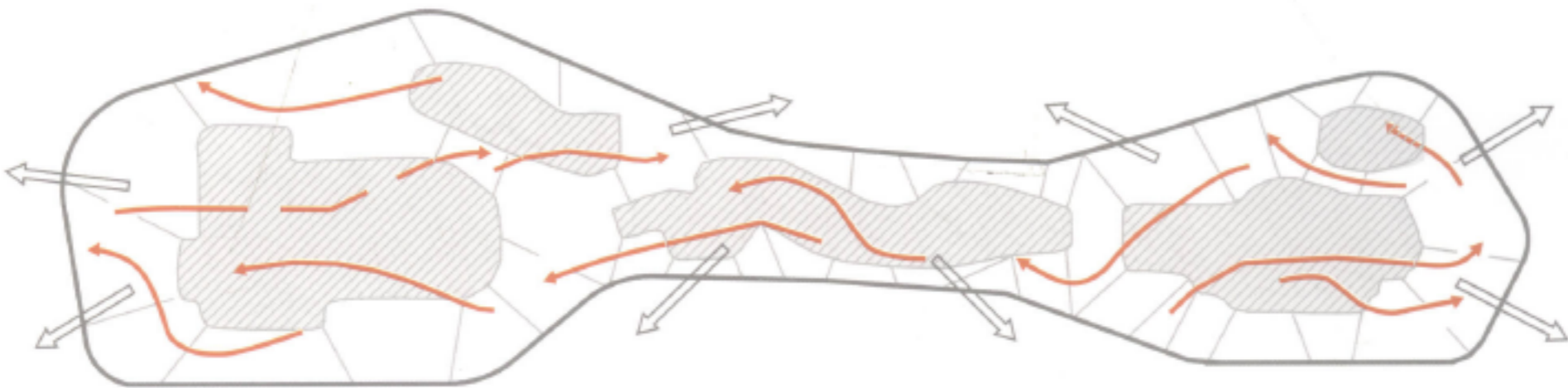
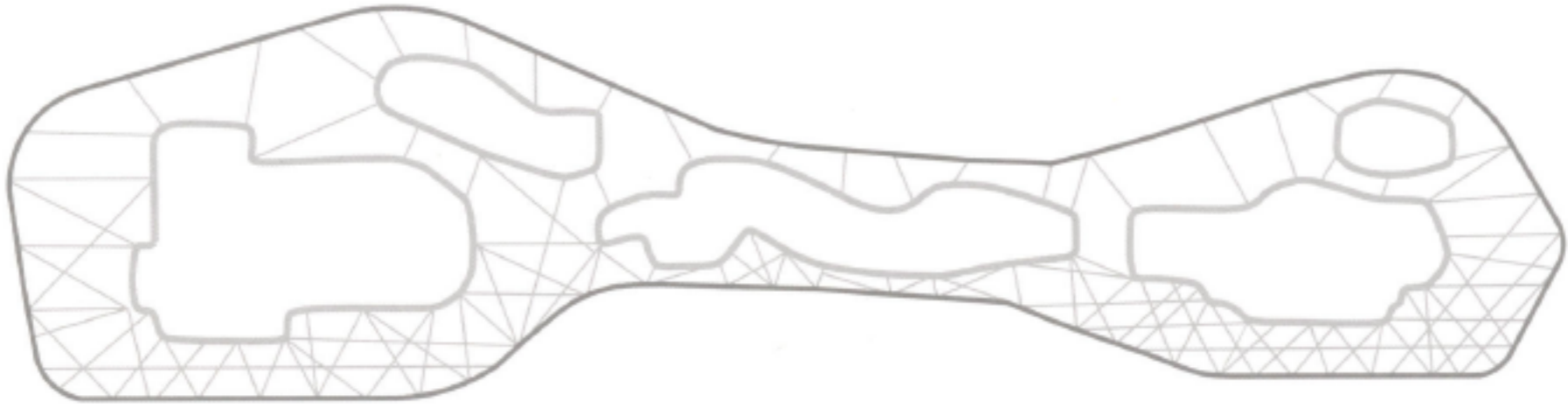
Section
剖面圖



這種集歌劇和表演藝術為一體的綜合性大樓的結構設計的靈感來自於兩個平衡的對立面標識：陰陽。我們的計劃意在營造出一個海綿狀結構，其中主項目呈懸掛狀。這就在周圍構造出一個下沉空間，可以作流通大廳用，也可以作氣候和音效的緩衝地帶。橫穿其中的步行區域可以讓遊客享受酒吧和餐廳提供的服務，以及漢江上島嶼的獨特美景。兩個核心項目即歌劇廳和音樂廳被安置在大路的两邊。大樓底部是后勤和演職人員工作區域，上層則主要是公共區域，頂部是VIP專區，行政辦公區域坐落在這些私人 and 公共空間之間。除了此次競賽中核心項目的要求之外，我們的提議還包括了諸如為博物館、歌劇廳和音樂廳之間的文化銜接，專門配備電子音樂和多媒體項目的網絡音樂特區；進行演講和會議的禮堂，以及可以上音樂課的教育中心。

挑戰目標：島嶼頂端的橋梁既是兩重性的象征，也是交通要道（在統一還未到來之前）。我們要設計一個具有標志性的有機項目，可以很自然和韓國相連系，成為亞洲的新文化中心。

具體實現：大樓的結構被構想成一個連綿的海綿狀結構，外層和項目核心內部之間構成一個3D網。這個海綿結構根據實體力量的流動必要時會變得密集，稠密或粗糙，疏松。



Structural principle
結構分析圖