



Exterior plant 建筑外庭和植物

## Villa A

The property is about 5,000 square metres in a protected green zone with an old tree population. The architects orientate the living areas towards southwest. This side is entirely open to the panoramic view over the city and the garden. On the north side, the building façade is closed with natural stonework to provide intimacy towards the street. Following the topography of the site, the house is partly caved in the ground. A central hall with an open staircase gives access to various areas on different levels.

Garage, building services, fitness area, guestroom and office are allocated in the lower, carved-in storey. Living, dining and kitchen area are distributed on three different levels on the middle part of the building. The sleeping rooms are situated in the roof structure on the upper level.

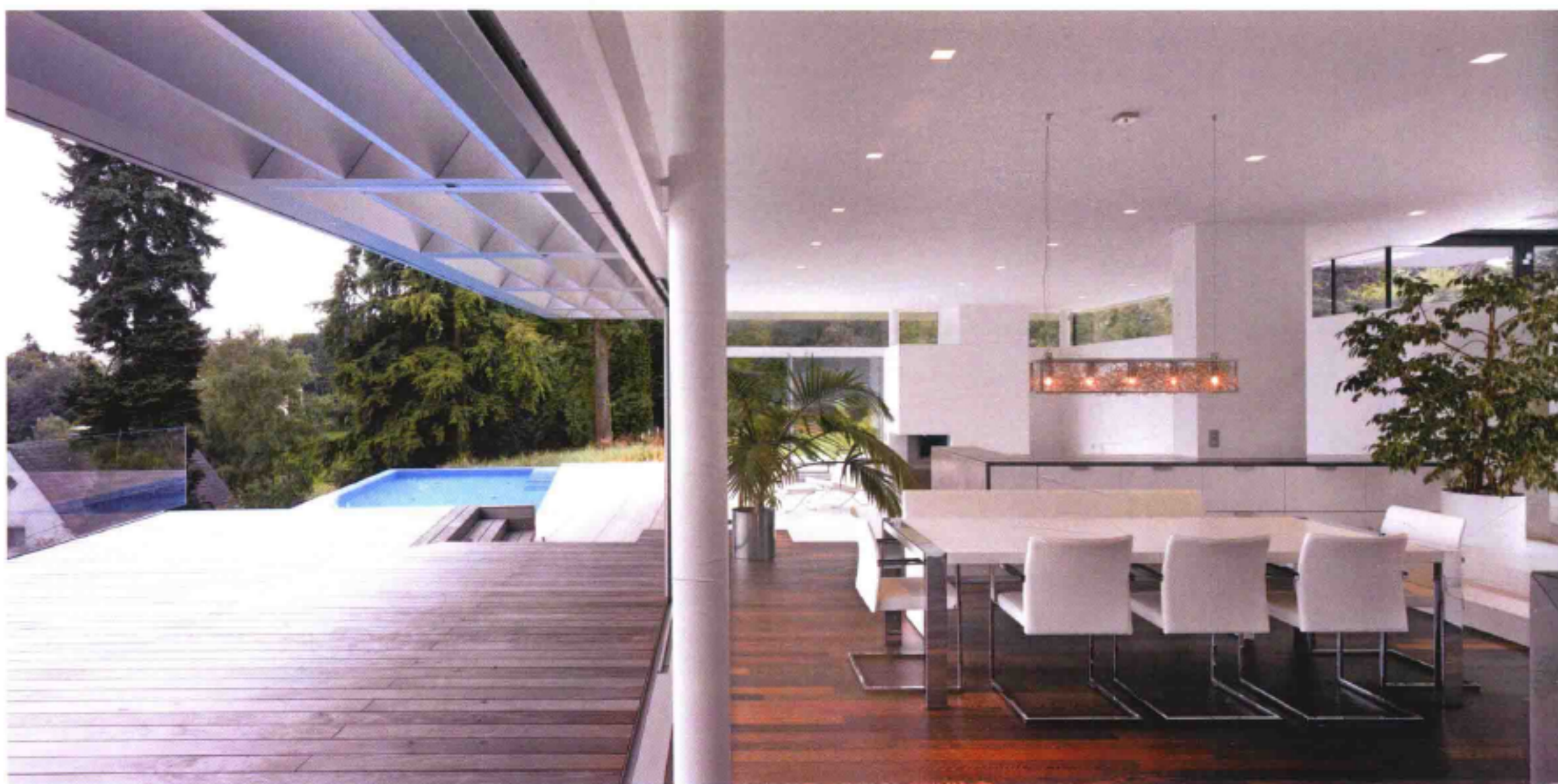
The architect's intention was to differentiate formally and structurally the upper floor from the other two levels below. The purpose was to contrast the different function in the building. The lower levels are mostly designated for living, lounging and dining. These activities are embedded with different levels into the topography of the land and have direct access to the surrounding garden. The earthy relationship led the architects to opt for massive concrete structure that is clad with stone. Above these, bedrooms are embedded into a roof structure carried by steel columns, totally detached from the massive walls below, almost flying over the massive walls.

## A别墅

别墅位于一片绿树的环绕之中，面积约为5,000平方米。建筑师将生活区设置在西南侧，这个方位可以俯瞰城市全景和花园。北侧的墙壁由天然石材构成，保证了别墅的私密性。别墅依地势而建，有一部分结构嵌入地下。中央大厅的开放式楼梯可以通往不同楼层的各个区域。

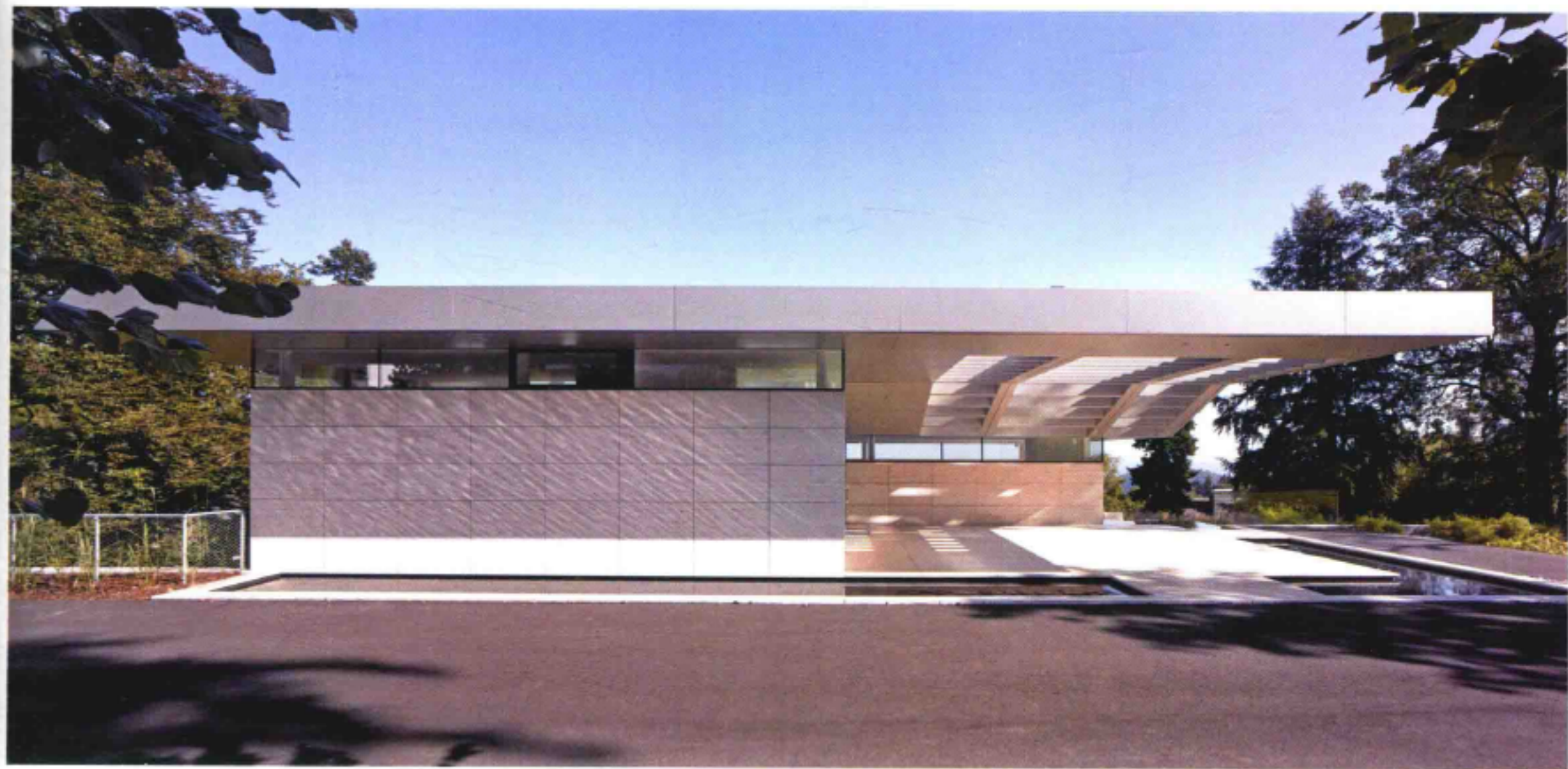
车库、辅助设施、健身区、客房和办公室设在底层的嵌入式楼层中。起居室、餐厅和厨房分设在别墅中心的三个楼层中。卧室则设在顶层的阁楼。

建筑师试图将别墅的顶层和下面的两层区分，目的是明确建筑的各个功能区。较低的楼层基本是起居、休息和就餐空间，这些活动被分配在不同的楼层，可以直接通往花园。建筑与泥土的紧密联系让设计师决定采用覆盖石块的混凝土结构。顶楼的卧室由钢柱所支撑，与下方的墙体彻底分离，几乎是飞跃在墙体之上。



Dinner area 餐厅

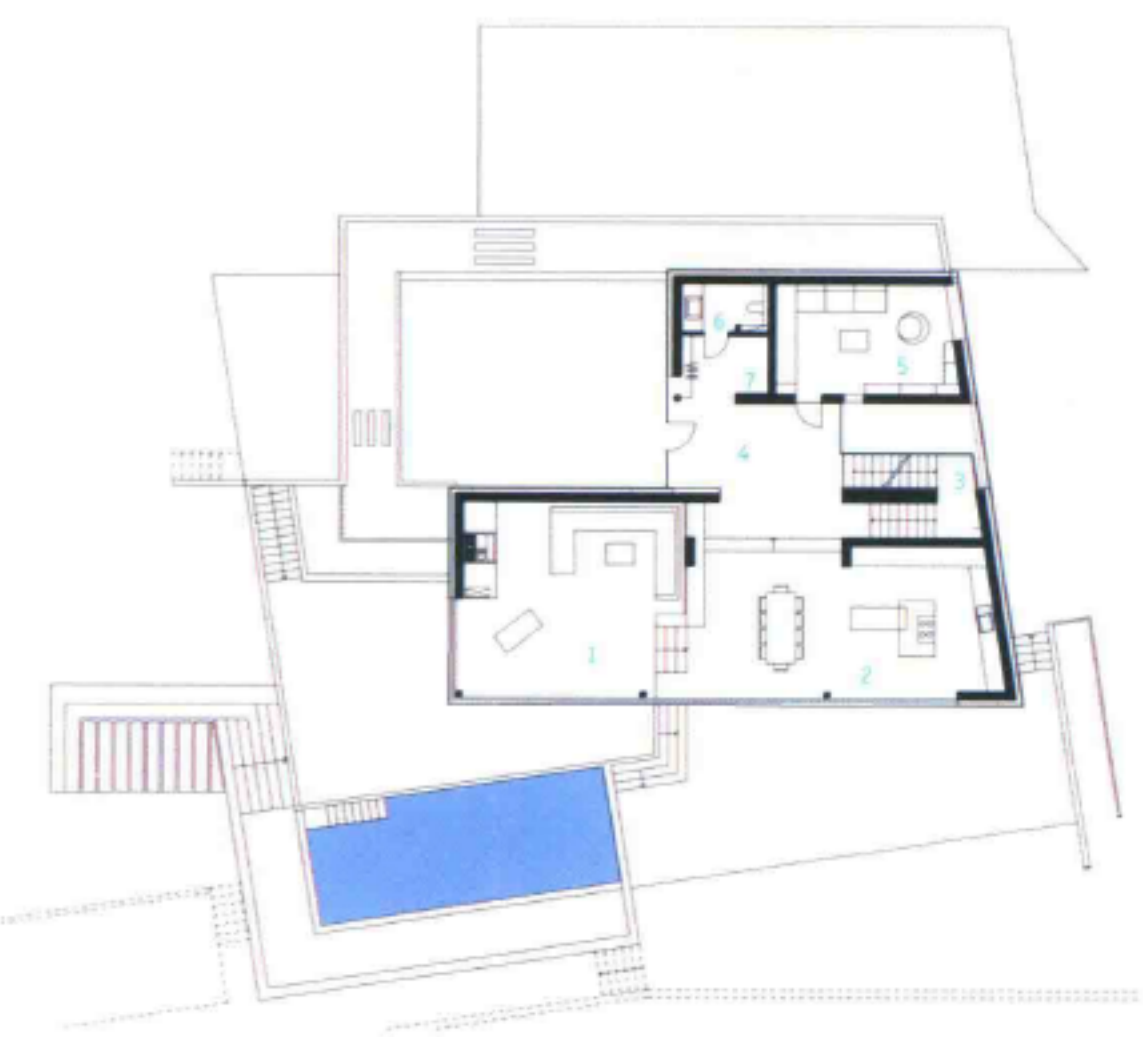




建筑侧面的自然光 Side daylight



建筑外观 Exterior



1. 起居室
2. 餐厅
3. 楼梯
4. 入口
5. 会客厅
6. 洗手间
7. 保卫室

1. living area
2. dining area
3. staircase
4. entrance
5. saloon
6. WC
7. guard

Photo: Manfred Seidl (seidl.m.foto@aon.at)

Architect: Najjar-Najjar Architekten

Completion Date: 2008

Residential